

RECOMMENDED SOLDERING PAD LAYOUT FOR SURFACE MOUNT DEVICES



Pad Layout Reference

Unit : inch(mm)

Figure Dimensions	Micro Melf	Mini Melf / Quadro Melf	Melf	SOD-123	SOD-323	SOD-523	SOD-123FL
A	.055 (1.4)	.067 (1.7)	.106 (2.7)	.028 (0.7)	.023 (0.65)	.031 (0.8)	.047(1.2)
B	.024 (0.6)	.051 (1.3)	.059 (1.5)	.047 (1.2)	.053 (1.35)	.024 (0.6)	.047(1.2)
C	.098 (2.5)	.189 (4.8)	.298 (6.3)	.193 (4.9)	.148 (3.75)	.091 (2.3)	.173(4.4)
D	.051 (1.3)	.083 (2.1)	.129 (3.3)	.098 (2.5)	.041 (1.05)	.043 (1.1)	.079(2.0)
E	.075 (1.9)	.014 (3.5)	.189 (4.8)	.146 (3.7)	.094 (2.4)	.067 (1.7)	.125(3.2)

Figure Dimensions	SMA (DO-214AC)	SMB (DO-214AA)	SMC (DO-214AB)	SMA-L	0603C	0805C	1206C
A	.067 (1.7)	.091 (2.3)	.129 (3.3)	.067 (1.7)	.039 (0.99)	.055 (1.4)	.067 (1.7)
B	.098 (2.5)	.098 (2.5)	.098 (2.5)	.098 (2.5)	.020 (0.51)	.020 (0.51)	.025 (0.64)
C	.256 (6.5)	.264 (6.7)	.366 (9.3)	.256 (6.5)	.074 (1.88)	.088 (2.24)	.135 (3.44)
D	.059 (1.5)	.070 (1.8)	.173 (4.4)	.055 (1.4)	.034 (0.86)	.048 (1.22)	.085 (2.16)
E	.157 (4.0)	.169 (4.3)	.268 (6.8)	.157 (4.0)	.054 (1.37)	.068 (1.73)	.110 (2.8)

Figure Dimensions	SMAFL	SMBFL
A	.071(1.8)	.10(2.54)
B	.063(1.6)	.071(1.8)
C	.212(5.4)	.259(6.6)
D	.086(2.2)	.118(3.0)
E	.149(3.8)	.188(4.8)

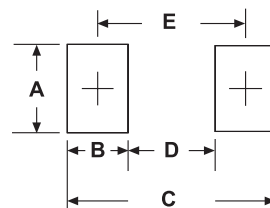


Figure Dimensions	SOT-323	SOT-23
A	.110 (2.8)	.114 (2.9)
B	.028(0.7)	.031 (0.8)
C	.039 (1)	.053 (1.35)
D	.075 (1.9)	.079 (2)
E	.035 (0.9)	.035 (0.9)

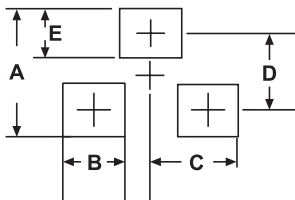


Figure Dimensions	TO-252 (DPAK)	TO-263 (D ² PAK)
A	.276 (7.0)	.425 (10.8)
B	.276 (7.0)	.449 (11.4)
C	.098 (2.5)	.138 (3.5)
D	.059 (1.5)	.043 (1.1)
E	.091 (2.3)	.098 (2.5)
F	.0272 (6.9)	.374 (9.5)
G	.457 (11.6)	.665 (16.9)
H	0.181 (4.6)	0.196(5.0)

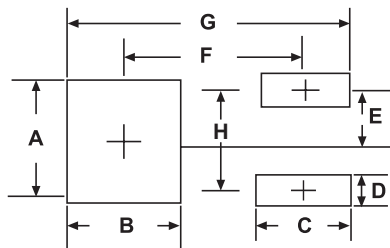


Figure Dimensions	SOT-363
A	.098 (2.5)
B	.051 (1.3)
C	.024 (0.6)
D	.017 (0.42)
E	.075 (1.9)
F	.026 (0.65)

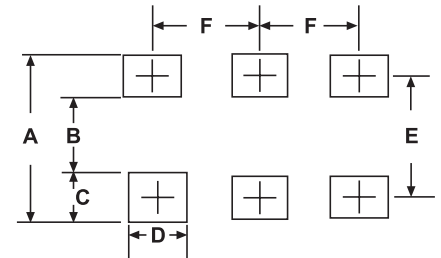


Figure Dimensions	TO-277A
A	.267 (6.8)
B	.189 (4.8)
C	.185 (4.7)
D	.050(1.28)
E	.055(1.4)
F	.046(1.4)
G	0.11(2.8)

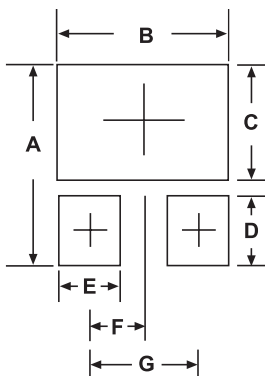


Figure Dimensions	DB-1MS	DB-1S	ABS/ABF	MBFL	MBF/MBS
A	.032 (0.82)	.047 (1.20)	.035 (0.9)	.035 (0.9)	.035(0.9)
B	.036 (0.92)	.060 (1.52)	.024 (1.5)	.047 (1.2)	.094(2.4)
C	.105 (2.67)	.205 (5.21)	.161 (4.1)	.106 (2.7)	.100(2.5)
D	.272 (6.91)	.406 (10.3)	.264 (5.72)	.276 (7.0)	.330(8.4)
E	0.24 (6.15)	0.34 (8.78)	0.16 (4.22)	0.22 (5.8)	0.24 (6.15)

