

# Test Report

No. : CE/2007/57321

Date : 2007/06/06

Page : 1 of 5

DC COMPONENTS CO., LTD.  
NO. 8, LANE 427, SHUI YUAN ROAD, FENG YUAN, TAICHUNG, TAIWAN,  
R. O. C.



The following sample(s) was/were submitted and identified by/on behalf of the client as :

Sample Description : PLASTIC RECTIFIER  
Style/Item No. : R-1, A-405, DO-41, DO-15, R-3, DO-27, DO-201AE, R-6M, R-6, SOD-123, SOD-123F, SOD-323, SOD-323F, SOD-523, SOD-723, SOT-23, SOT-223, SOT-323, SOT-346, SOT-416, SOT-353, SOT-363, SOT-89, HVM, TO-220A, TO-220, TO-3, TO-3P, TO-92, TO-92S, TO-126, TO-126ML, TO-251, TO-252, TO-263, SMA, SMB, SMC, SM-1, SM-2, RA, RAS, 0603, 0805, 1005, 1006, 1206, 2010, 2114  
Sample Receiving Date : 2007/05/30  
Testing Period : 2007/05/30 TO 2007/06/06

=====  
**Test Requested** : In accordance with the RoHS Directive 2002/95/EC, and its amendment directives.  
**Test Method** : With reference to IEC 62321, Ed.1 111/54/CDV Procedures for the Determination of Levels of Regulated Substances in Electrotechnical Products.  
(1) Determination of Cadmium by ICP-AES.  
(2) Determination of Lead by ICP-AES.  
(3) Determination of Mercury by ICP-AES.  
(4) Determination of Hexavalent Chromium for metallic samples by Spot test / Colorimetric Method.  
(5) Determination of Hexavalent Chromium for non-metallic samples by UV/Vis Spectrometry.  
(6) Determination of PBB and PBDE by GC/MS.  
**Test Result(s)** : Please refer to next page(s).

  
Daniel Yeh, M.R. / Operation Manager  
Signed for and on behalf of  
SGS TAIWAN LTD.

# Test Report

No. : CE/2007/57321

Date : 2007/06/06

Page : 2 of 5

DC COMPONENTS CO., LTD.

NO. 8, LANE 427, SHUI YUAN ROAD, FENG YUAN, TAICHUNG, TAIWAN,

R. O. C.



Test results by chemical method (Unit: mg/kg)

Test Item (s):	Method (Refer to)	Result			MDL
		No.1	No.2	No.3	
Cadmium (Cd)	(1)	n.d.	n.d.	n.d.	2
Lead (Pb)	(2)	n.d.	35	171	2
Mercury (Hg)	(3)	n.d.	n.d.	n.d.	2
Hexavalent Chromium Cr(VI) by Spot test / boiling water extraction	(4)	---	Negative	Negative	See Note 5
Hexavalent Chromium Cr(VI) by alkaline extraction	(5)	n.d.	---	---	2
<b>Sum of PBBs</b>	(6)	n.d.	---	---	-
Monobromobiphenyl		n.d.	---	---	5
Dibromobiphenyl		n.d.	---	---	5
Tribromobiphenyl		n.d.	---	---	5
Tetrabromobiphenyl		n.d.	---	---	5
Pentabromobiphenyl		n.d.	---	---	5
Hexabromobiphenyl		n.d.	---	---	5
Heptabromobiphenyl		n.d.	---	---	5
Octabromobiphenyl		n.d.	---	---	5
Nonabromobiphenyl		n.d.	---	---	5
Decabromobiphenyl		n.d.	---	---	5
<b>Sum of PBDEs (Mono to Nona) (Note 4)</b>		n.d.	---	---	-
Monobromobiphenyl ether		n.d.	---	---	5
Dibromobiphenyl ether		n.d.	---	---	5
Tribromobiphenyl ether		n.d.	---	---	5
Tetrabromobiphenyl ether		n.d.	---	---	5
Pentabromobiphenyl ether		n.d.	---	---	5
Hexabromobiphenyl ether		n.d.	---	---	5
Heptabromobiphenyl ether		n.d.	---	---	5
Octabromobiphenyl ether		n.d.	---	---	5
Nonabromobiphenyl ether	n.d.	---	---	5	
Decabromobiphenyl ether	n.d.	---	---	5	
<b>Sum of PBDEs (Mono to Deca)</b>	n.d.	---	---	-	

## TEST PART DESCRIPTION:

NO.1 : BLACK PLASTIC  
 NO.2 : BASE MATERIAL OF SILVER COLORED METAL PIN  
 NO.3 : PLATING LAYER OF SILVER COLORED METAL PIN

# Test Report

No. : CE/2007/57321

Date : 2007/06/06

Page : 3 of 5

DC COMPONENTS CO., LTD.

NO. 8, LANE 427, SHUI YUAN ROAD, FENG YUAN, TAICHUNG, TAIWAN,

R. O. C.



Note : 1. mg/kg = ppm

2. n.d. = Not Detected

3. MDL = Method Detection Limit

4. According to 2005/717/EC DecaBDE is exempt.

5. Spot-test:

Negative = Absence of Cr(VI) coating / surface layer,

Positive = Presence of Cr(VI) coating / surface layer;

(The tested sample should be further verified by boiling-water-extraction method if the spot test result cannot be confirmed.)

Boiling-water-extraction:

Negative = Absence of Cr(VI) coating / surface layer.

Positive = Presence of Cr(VI) coating / surface layer;

the detected concentration in boiling-water-extraction solution is equal or greater than 0.02 mg/kg with 50 cm<sup>2</sup> sample surface area.

6. "-" = Not Regulated

7. "---" = Not Conducted

## Test Report

No. : CE/2007/57321

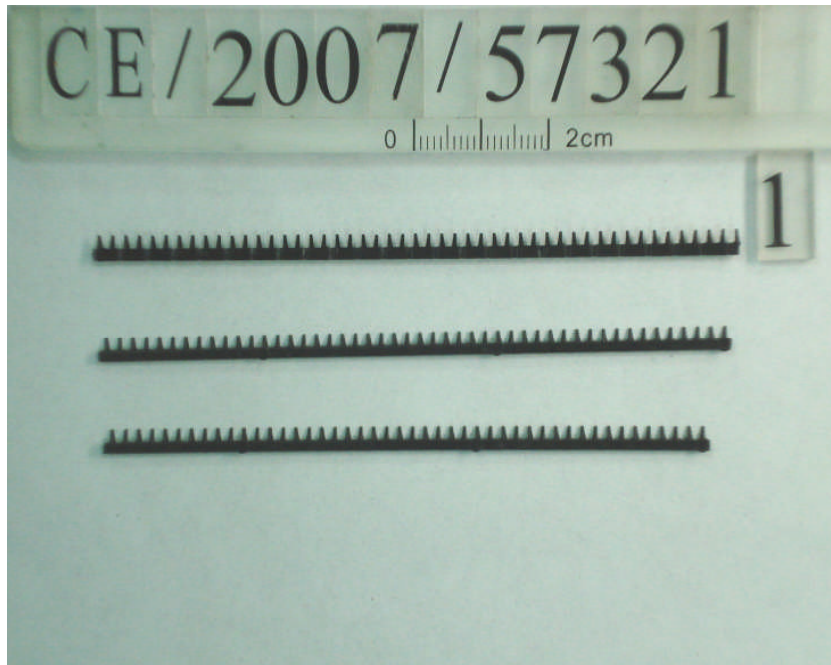
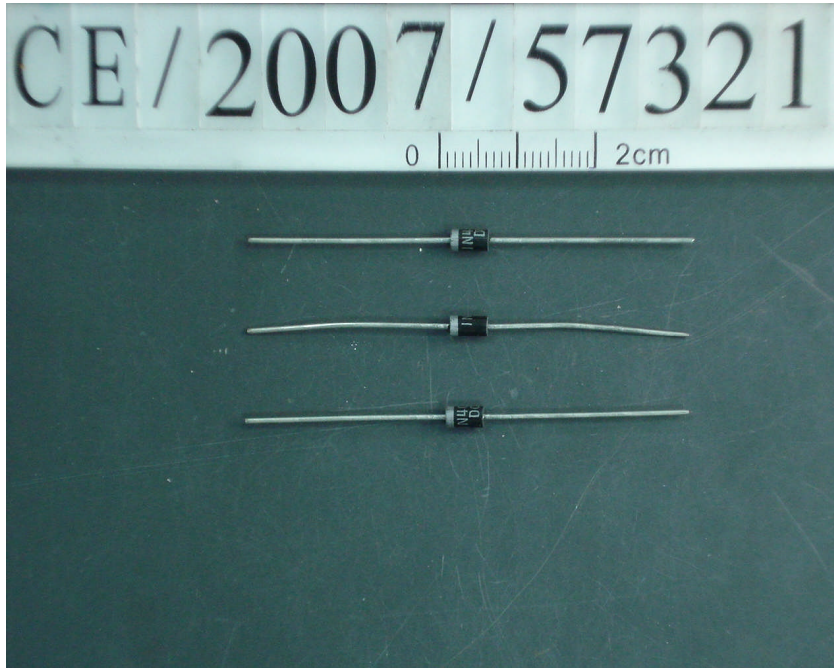
Date : 2007/06/06

Page : 4 of 5

DC COMPONENTS CO., LTD.

NO. 8, LANE 427, SHUI YUAN ROAD, FENG YUAN, TAICHUNG, TAIWAN,

R. O. C.

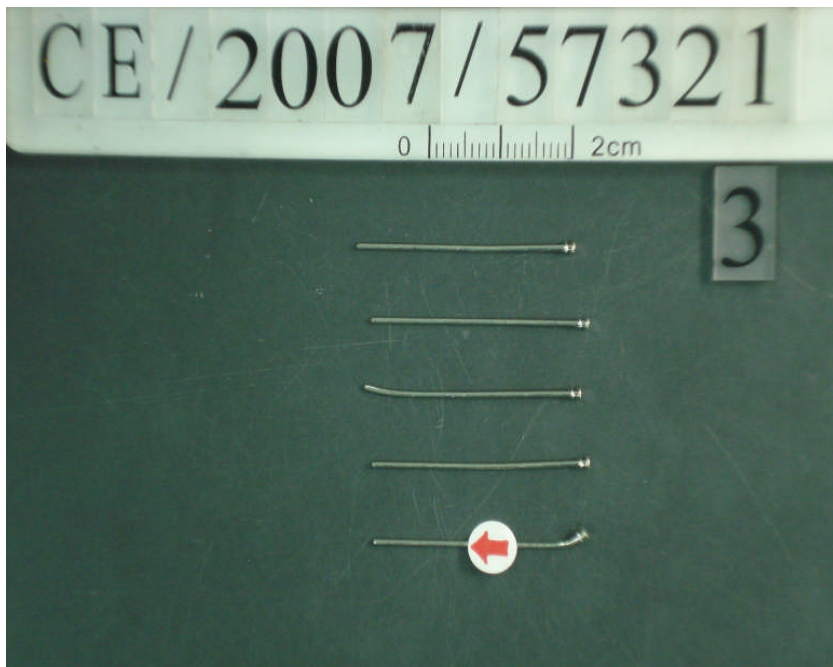
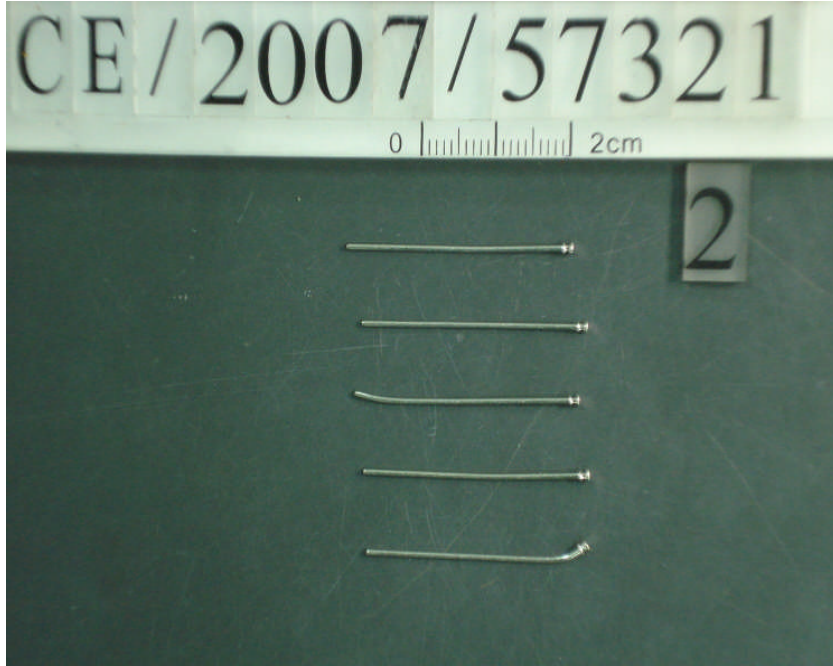


## Test Report

No. : CE/2007/57321    Date : 2007/06/06

Page : 5 of 5

DC COMPONENTS CO., LTD.  
NO. 8, LANE 427, SHUI YUAN ROAD, FENG YUAN, TAICHUNG, TAIWAN,  
R. O. C.



\*\* End of Report \*\*